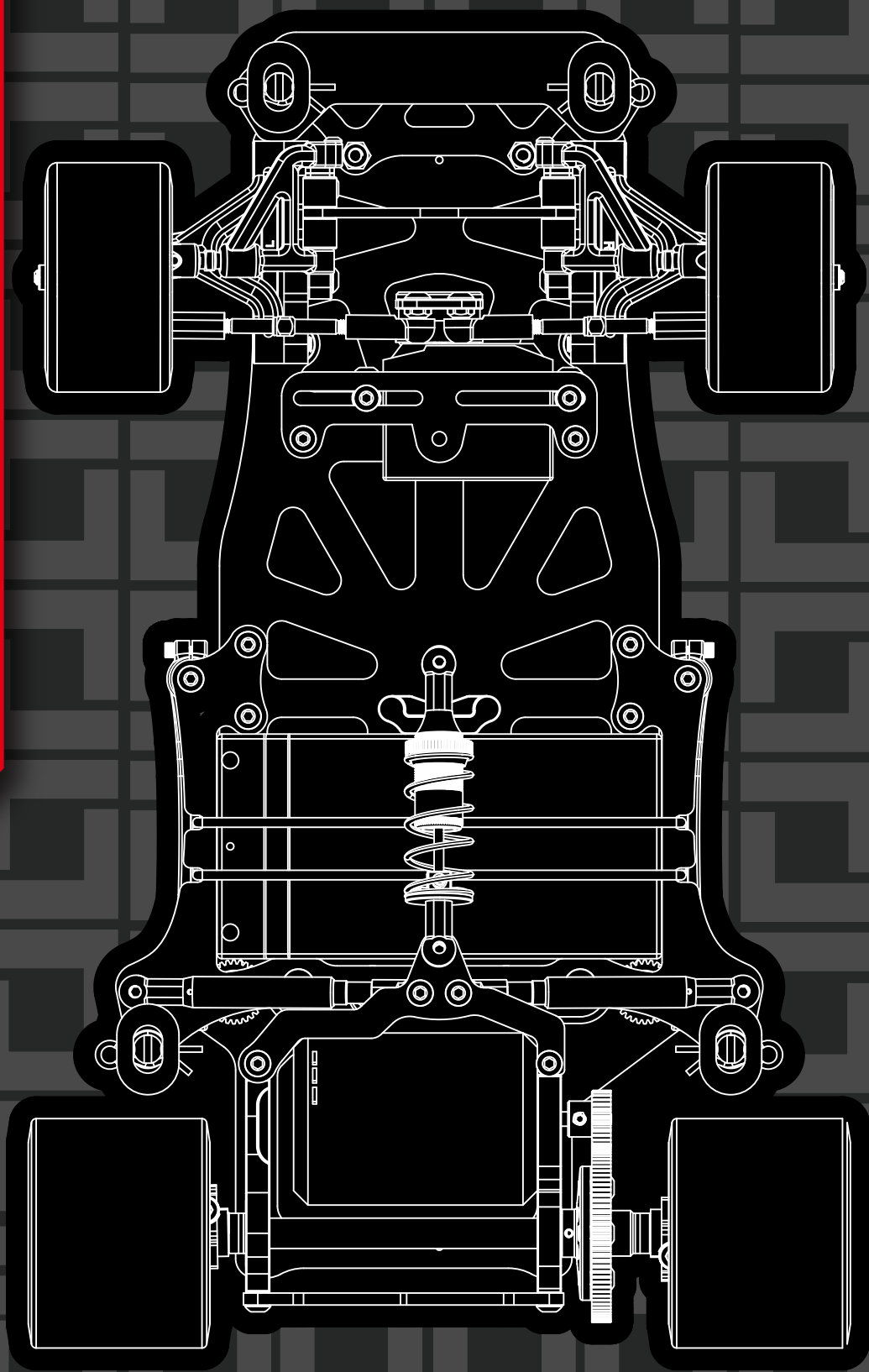


# RSX

## GT-3000W-V4



Thank you for purchasing this TEAMSAXO product. This high performance competition kit has been proudly manufactured by TEAMSAXO World Champion R/C car manufacturer.  
Proper assembly of this product will provide fun,safe enjoyment.

## PRECAUTIONS FOR SAFE ENJOYMENT OF YOUR R/C CAR

For children under the age of 13, parental guidance is recommended when running.

### ASSEMBLY PRECAUTIONS

Do not assemble around small children. The parts can be dangerous if accidentally swallowed.

Check the contents carefully before assembly. Please contact Customer Support if you happen to notice any defective or missing items.

You will find the assembly process much easier by carefully reading through the manual, and familiarizing yourself with the instructions.

Many different tools are required during assembly. For safety purposes, please use suitable tools. Exercise extra caution when using a sharp tool such as a hobby knife.

Many different materials are used for the parts. Use extra care when handling parts with sharp edges, such as machined metal parts.

When cutting plastic parts, watch for any flying parts.

Try to assemble any rotating parts of drivetrain parts as smooth as possible.

Bundle wires neatly away from the ground or any moving drivetrain components. Make sure that all wires are properly connected to prevent shorting.

Unnecessary modifications may be unsafe and hinder performance.

Always paint in a well ventilated area away from flames.

### PRECAUTIONS BEFORE RUNNING

Teamsaxo R/C cars are built for competition use, and some models may exceed speeds of 40km per hour. Practice common sense and run the car in open safe places, or R/C car tracks.

Do not run the car on public roads with high amounts of traffic, or in areas that may cause an inconvenience to people in that area.

R/C cars are controlled using radio frequency. In a worst-case scenario, radio interferences may cause loss of control.

If others near you are running R/C cars, confirm that they are not running on the same frequency.

R/C cars do not like water. Avoid running on rainy days, or areas with water puddles. Exposure of the electronics to water may cause loss of control or damage to the electronics.

The drivetrain of an R/C car consists of many moving parts like gears, belts, shafts, and tires. Avoid touching these areas when the battery is connected.

Many parts of an R/C car will become hot after running. Allow the parts to sufficiently cool before conducting any maintenance.

### BEGINNING A RUN

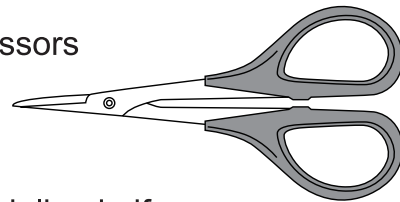
1. Place the R/C car on a stand so the wheels are off the ground.
2. Confirm that the speed controller switch is OFF, and connect the motor and battery.
3. Extend the transmitter antenna and turn the switch ON. (It is unsafe to use a transmitter with low voltage. Make sure that the transmitter batteries are good before running)
4. Turn the speed controller switch ON.

### FINISHING A RUN

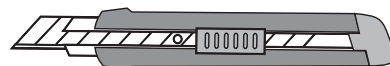
1. Turn the speed controller switch OFF.
2. Disconnect the battery.
3. Turn the transmitter switch OFF, and retract the antenna.

## ASSEMBLING TOOLS REQUIRED (NOT INCLUDED IN KIT)

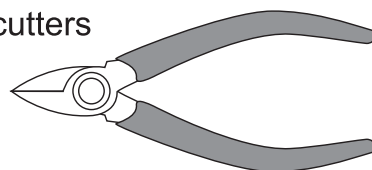
### Scissors



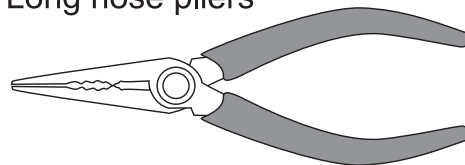
### Modeling knife



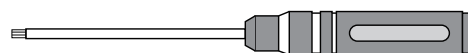
### Side cutters



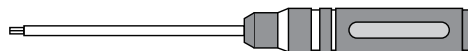
### Long nose pliers



### Hex wrench (1.5mm)



### Hex wrench (2mm)



### Tweezers



## GT-300W-V4 CHASSIS SPECIFICATION

Overall Length	: 275mm	Overall Width	Front width :165mm
Wheelbase length	: 109mm		Rear width :172mm
Weight Chassis only	: 373g		

### Cap

	M3×4	SJG304
	M3×6	SJG306
	M3×8	SJG308
	M3×10	SJG310

### Cap screw

	M2×6	SG206
	M3×8	SG308
	M3×12	SG312

### E-Ring

	E-Ring 2.0	OE-E2.0
--	------------	---------

### Screw

	M2.5×4	SIG2.54
	M3×4	SIG304
	M3×6	SIG306
	M3×8	SIG308
	M3×10	SIG310

### Grub screw

	M3×3	SK303
	M3×8	SK308
	M3×10	SK310

### Lock nut

	M4	SN-M4-F
	M3	SN-M3-F
	M3	SN-M3

### Ball bearing

	6.35×9.525×3.175	FR168ZZ
	6.35×9.525×3.175	R168-2RS
	3×8×3.5	F3-8M



# ① ~ ③ Kit Bag A



TS0102010 .....3



SJG\_M3X6 .....1

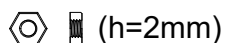
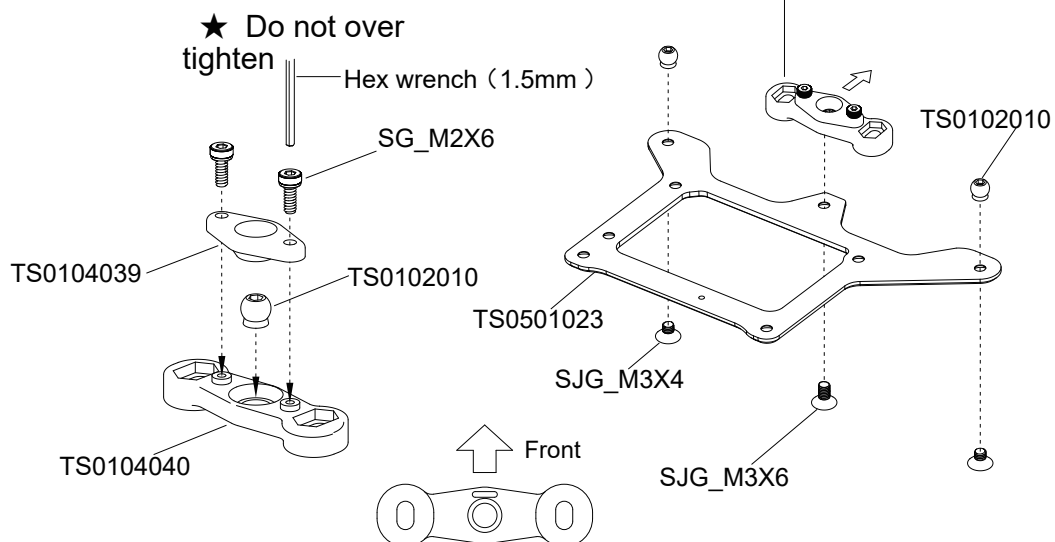


SJG\_M3X4 .....2



SG\_M2X6 .....2

## ① Lower deck

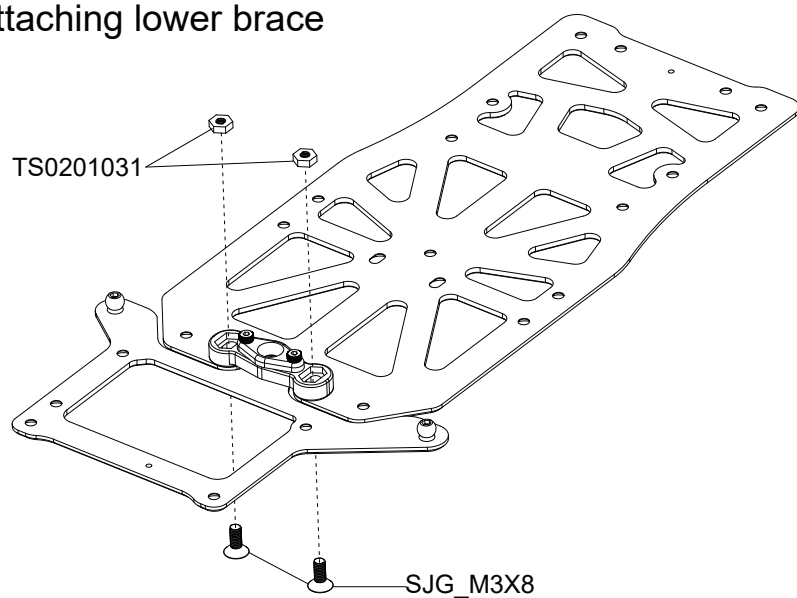


TS0201031 .....2



SJG\_M3X8 .....2

## ② Attaching lower brace



TS0104038 .....2



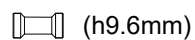
SG\_M2X6 .....4



TS0102010 .....2

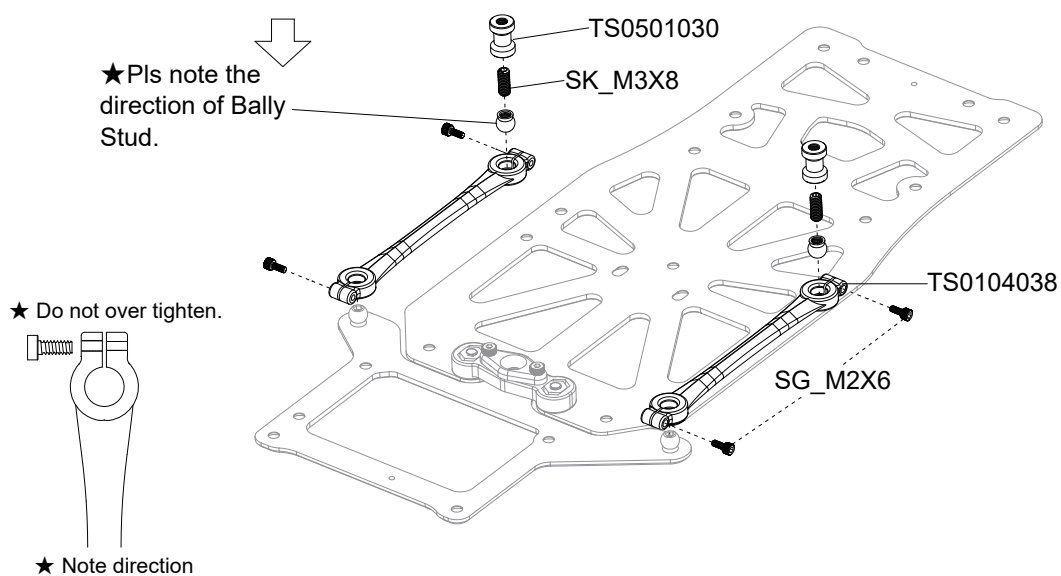


SK\_M3X8 .....2



TS0501030 .....2

## ③

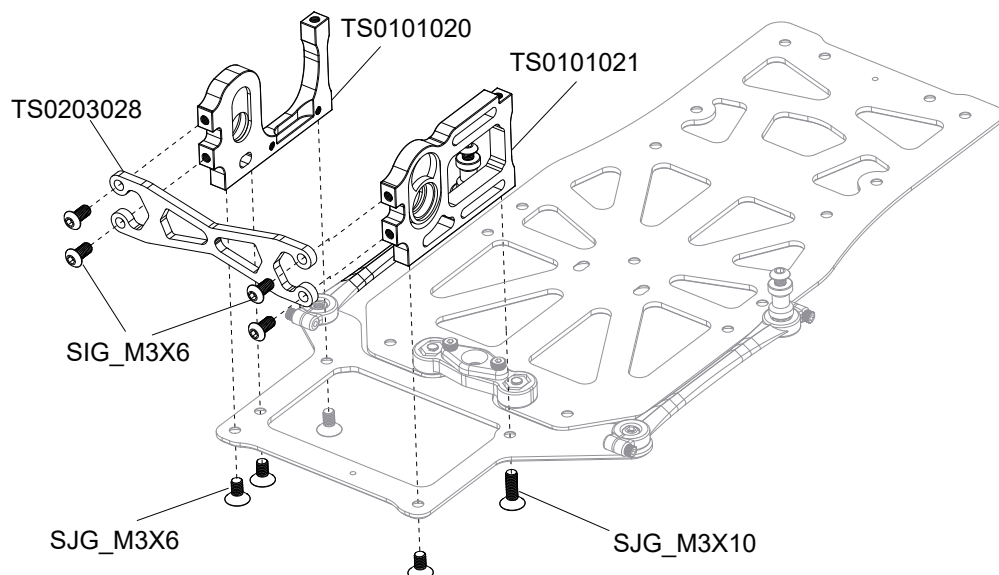




## ④ Kit Bag B

	SIG_M3X6	.....4
	SJG_M3X6	.....4
	SJG_M3X10	.....1
	TS0101020	.....1
	TS0101021	.....1

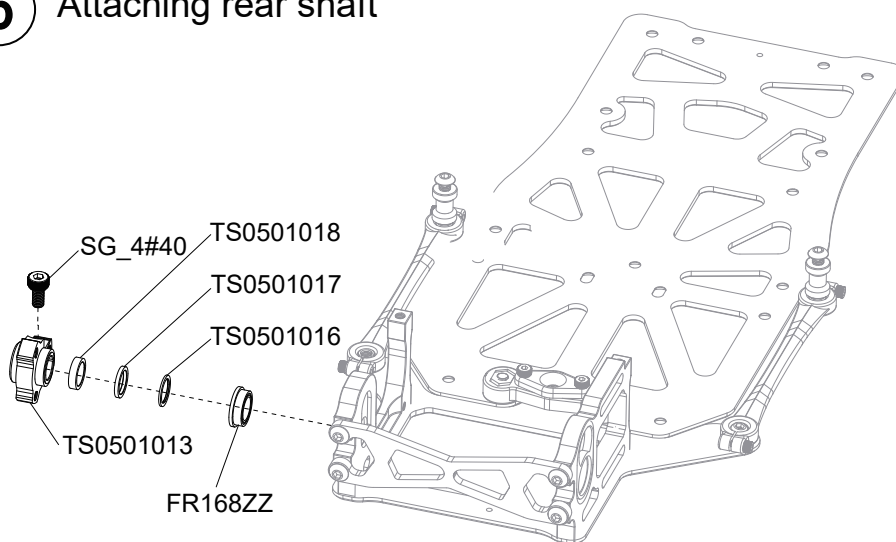
## ④ Motor mount



## ⑤~⑦ Kit Bag C

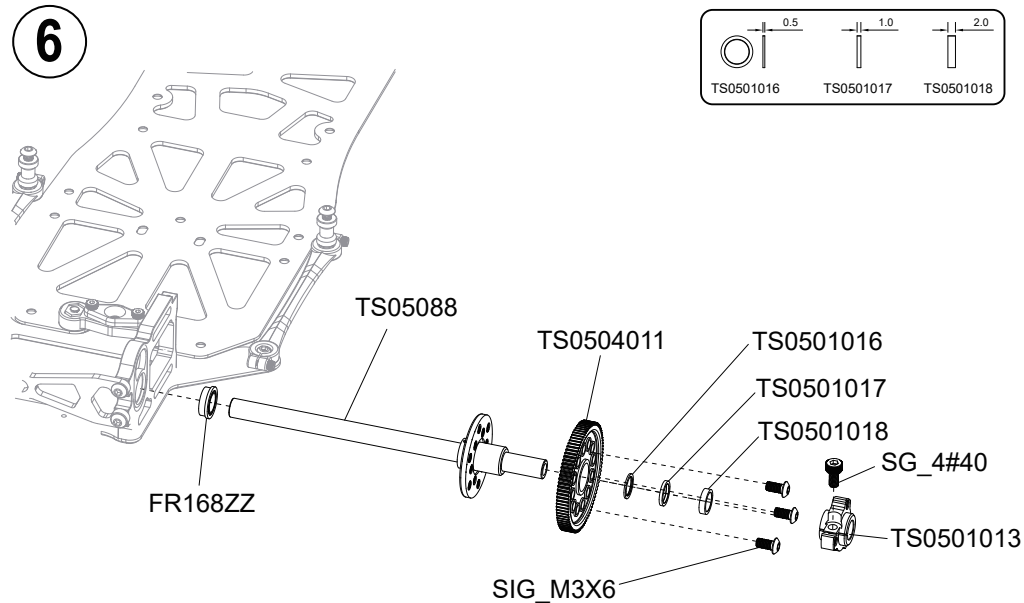
	(6.4X8.4X1.0)	.....1
	TS0501017	.....1
	(6.35×9.525X3.175)	.....1
	FR168ZZ	.....1
	SG_4#40	.....1

## ⑤ Attaching rear shaft

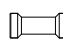


	(6.35×9.525X3.175)	.....1
	FR168ZZ	.....1
	SG_4#40	.....1
	SIG_M3X6	.....3
	(6.4X8.4X1.0)	.....1
	TS0501017	.....1

## ⑥





 (h=15mm)

TS0201026 .....4



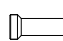
SJG\_M3X6 .....4



SJG\_M3X10 .....1



TS0101007 .....1

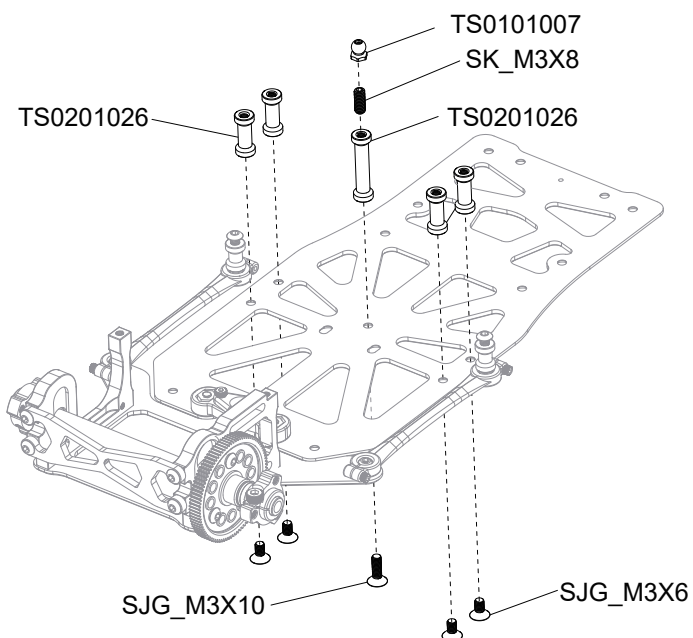
 (h=25mm)

TS0201026 .....1



SK\_M3X8 .....1

7



8 ~ 12  
Kit Bag D



TS0104042 .....2



TS0102001 .....2



TS0101007 .....2



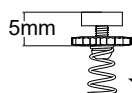
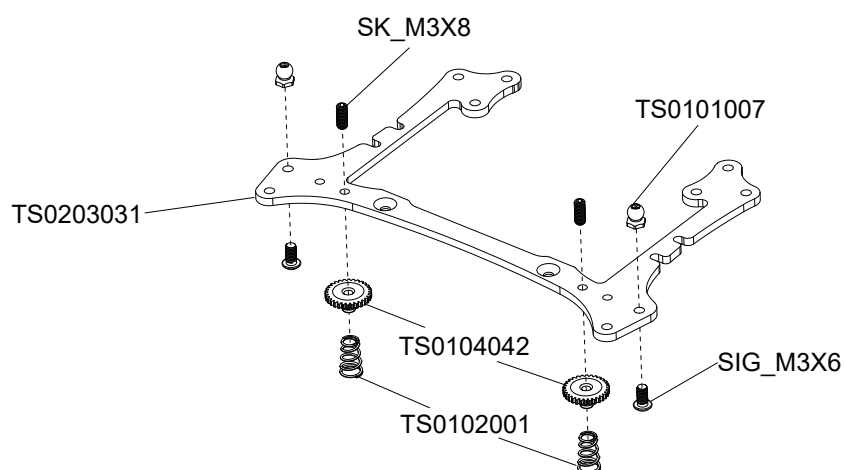
SIG\_M3X6 .....2



SK\_M3X8 .....2

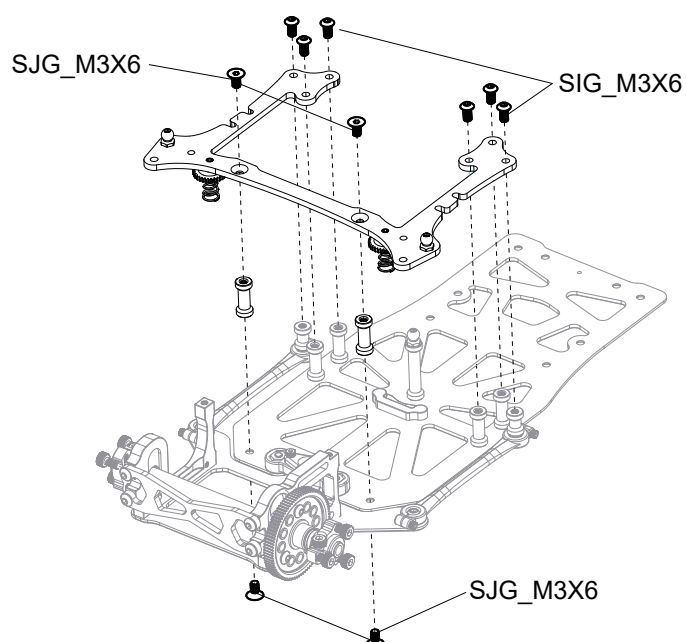
8

Body mount plate



★ Attach as shown.

9





TS0101007 .....3

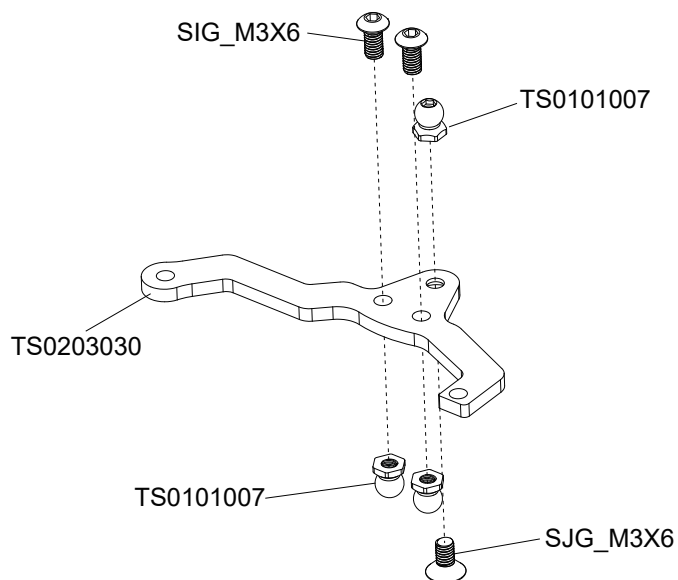


SIG\_M3X6 .....2



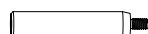
SJG\_M3X6 .....1

10



(L=13.5mm)

TS0104026 .....4



TS0101018 .....2



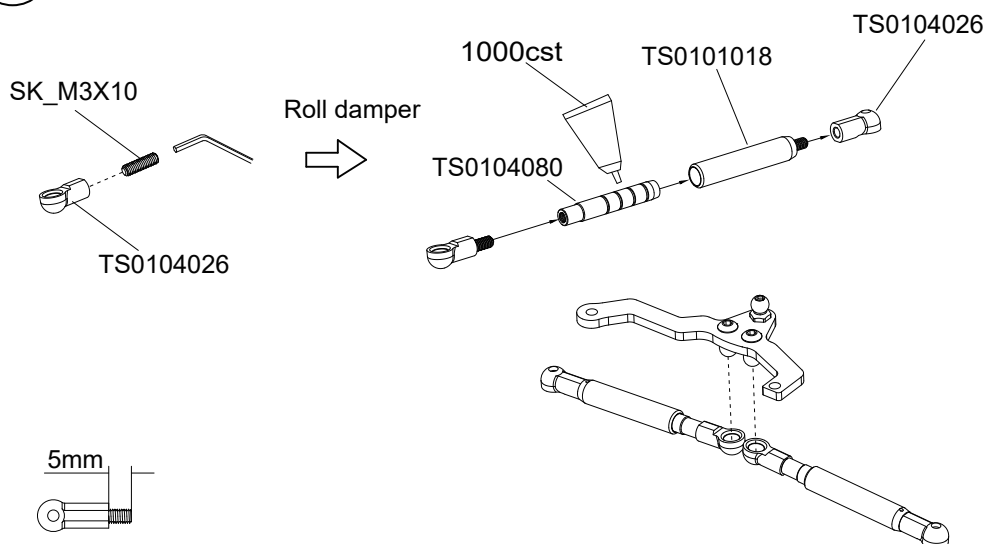
TS0104080 .....2



SK\_M3X10 .....2

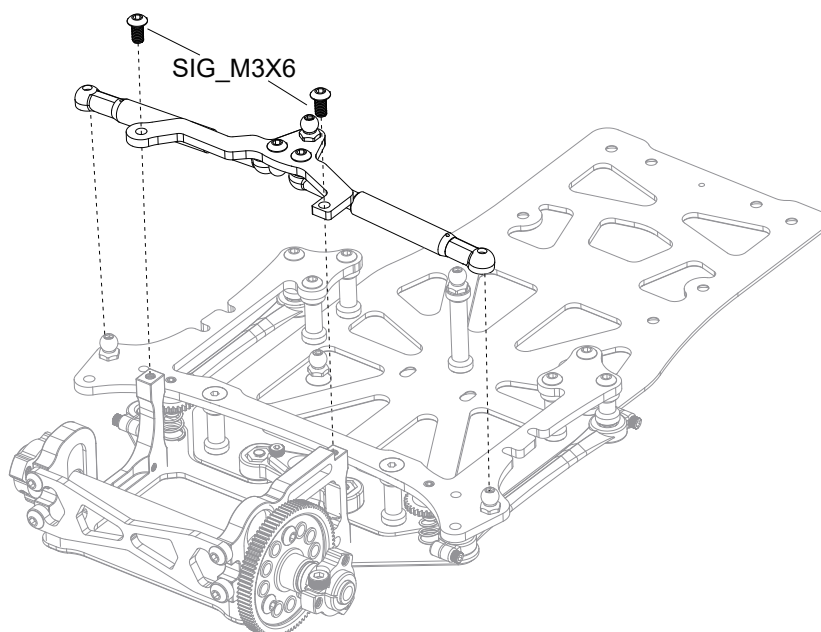
11

★ Apply different viscosities of grease to the piston to adjust roll damper hardness.



SJG\_M3X6 .....2

12





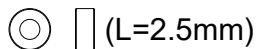
# **13 ~ 19** Kit Bag E



TS0101007 .....2



TS0202001 .....2



TS0101029 .....2

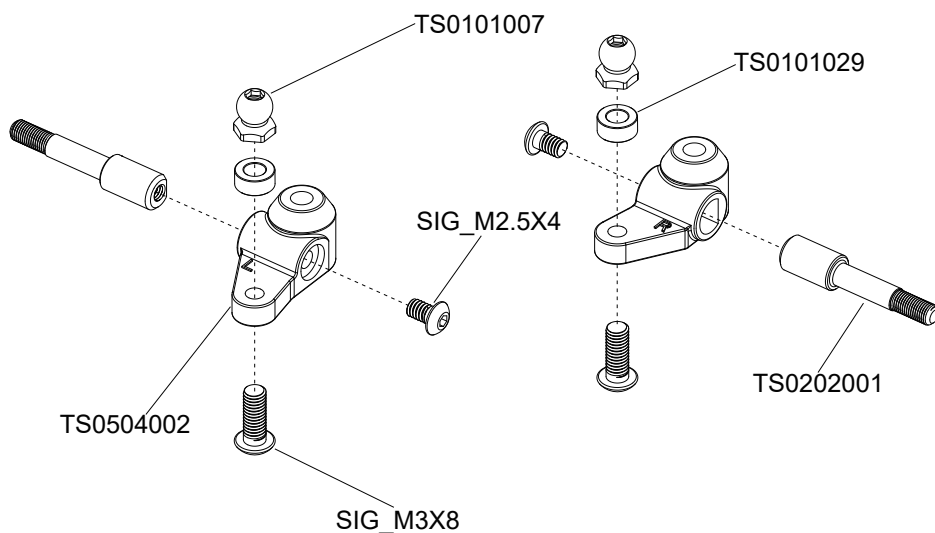


SIG\_M3X8 .....2

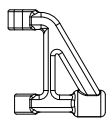


SIG\_M2.5X4 .....2

## **13** Attaching front uprights



TS0204004 .....2



TS0204002 .....2



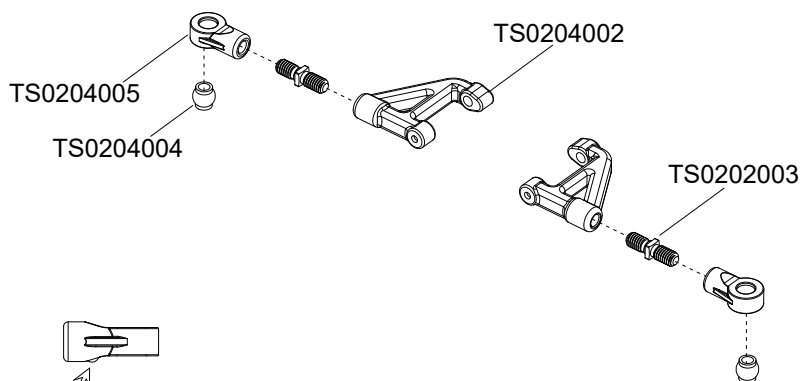
TS0202003 .....2



TS0204005 .....2

## **14**

Front  Reverse



Note:  
Install from the  
direction of the ball bump



TS0201001 .....2



TS0204001 .....2



SJG\_M3X12 .....4

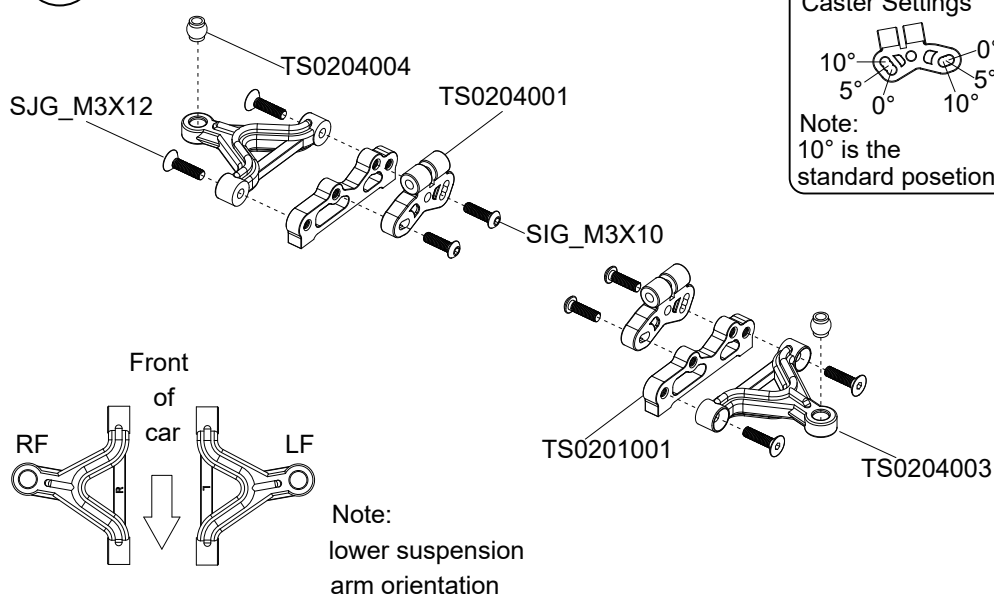


SIG\_M3X10 .....4

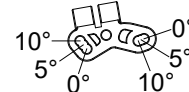


TS0204004 .....2

## **15**



Upper Suspension  
Mount Active  
Caster Settings



Note:  
10° is the  
standard position



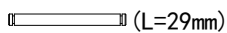
OE\_E2.0 .....4



TS0101030 .....2

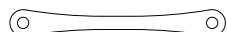
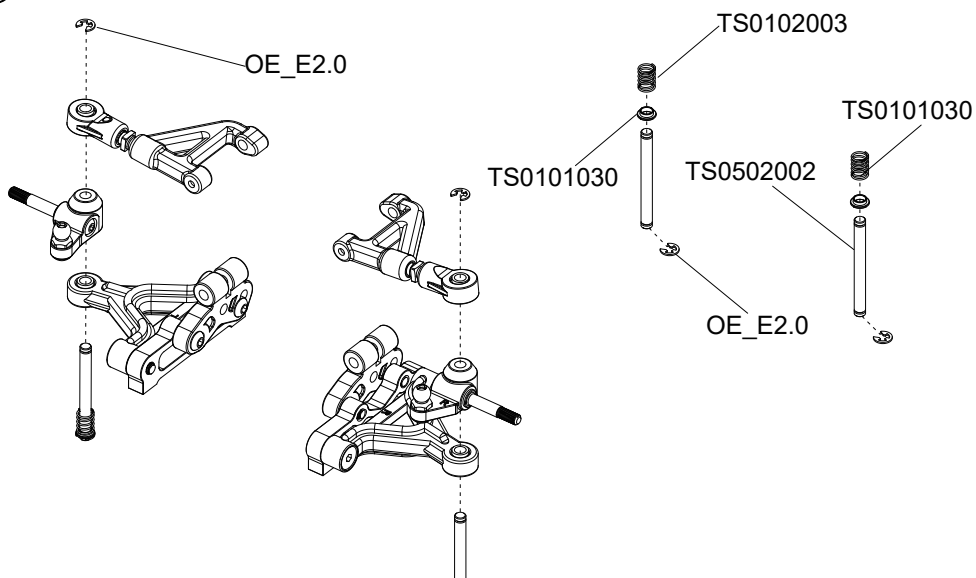


TS0102003 .....2



TS0502002 .....2

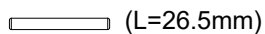
16



TS0503005 .....1

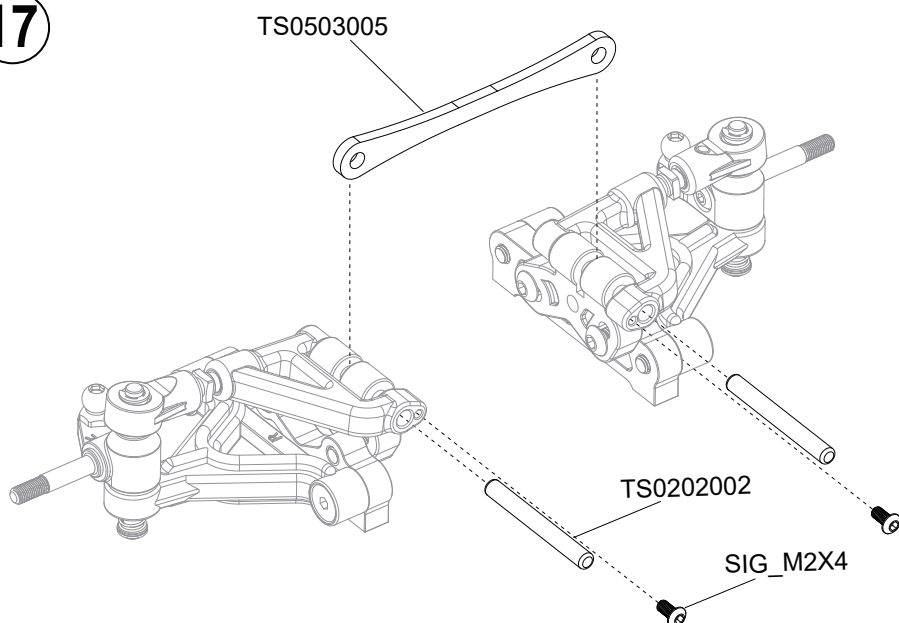


SIG\_M2X4 .....2



TS0202002 .....2

17



TS0201025 .....4



TS0201015 .....4



TS0201002 .....4

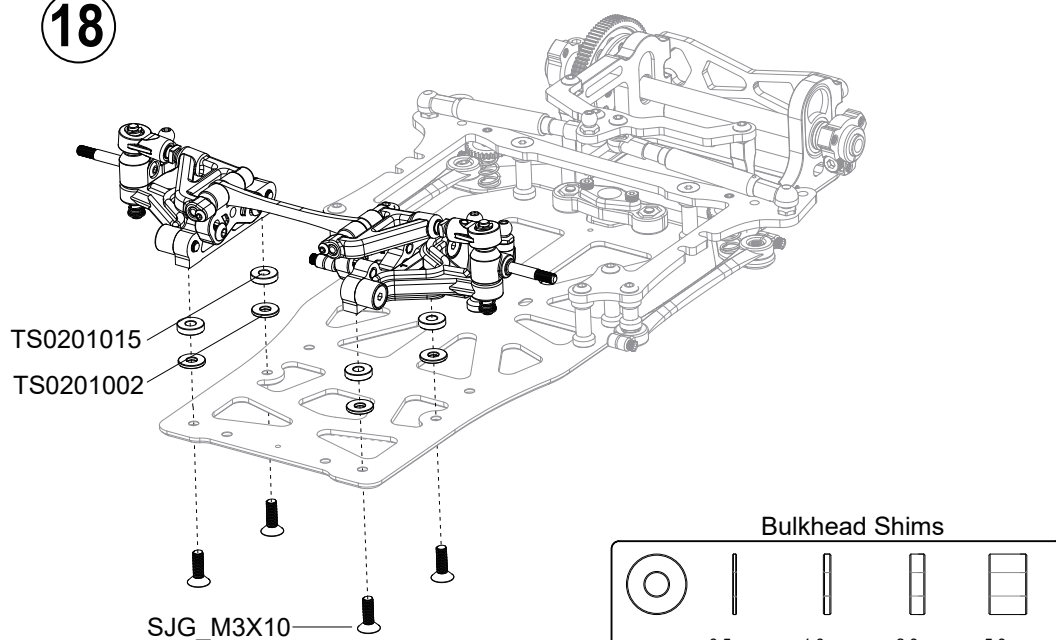


TS0201014 .....4



SJG\_M3X10 .....4

18



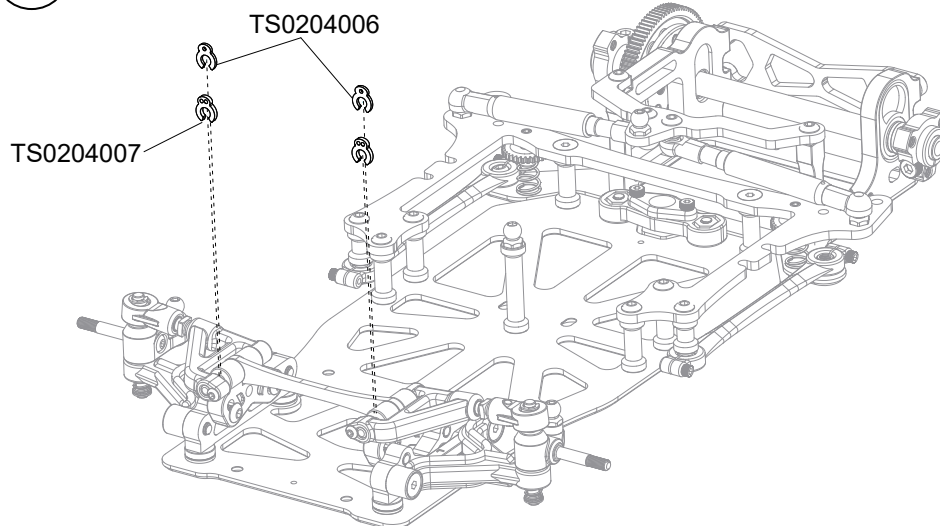


TS0204006 .....2

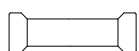


TS0204007 .....2

19



20 ~ 28  
Kit Bag F

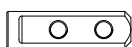
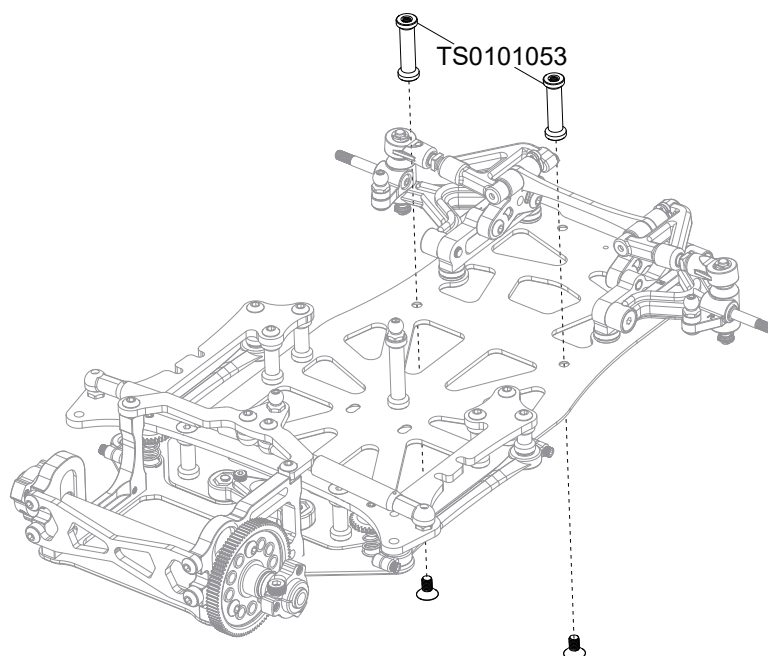


TS0101053 .....2



SJG\_M3X6 .....2

20



TS0501025 .....2



TS0101007 .....2



TS0102017 .....1



TS0102016 .....2

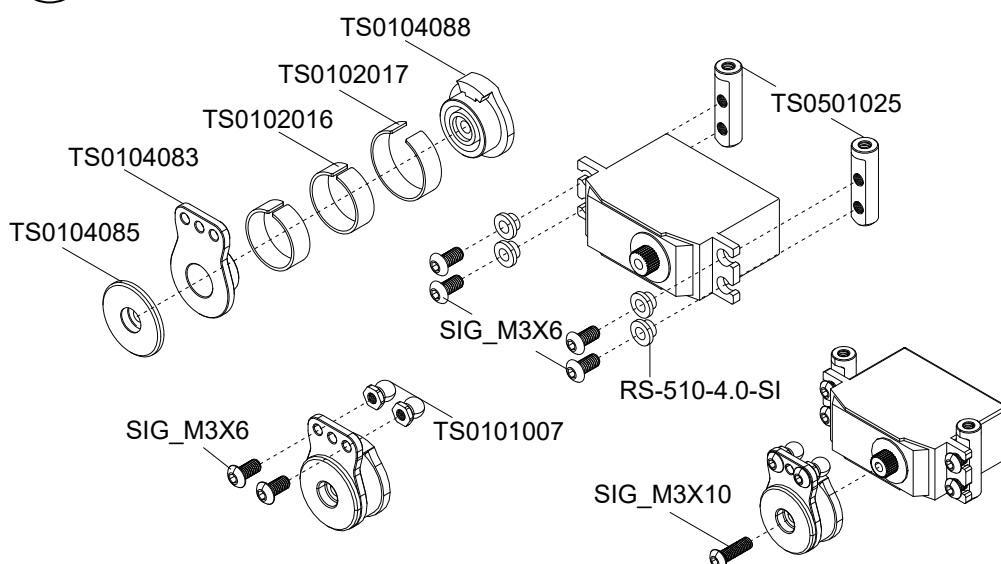


SIG\_M3X6 .....6



SIG\_M3X10 .....1

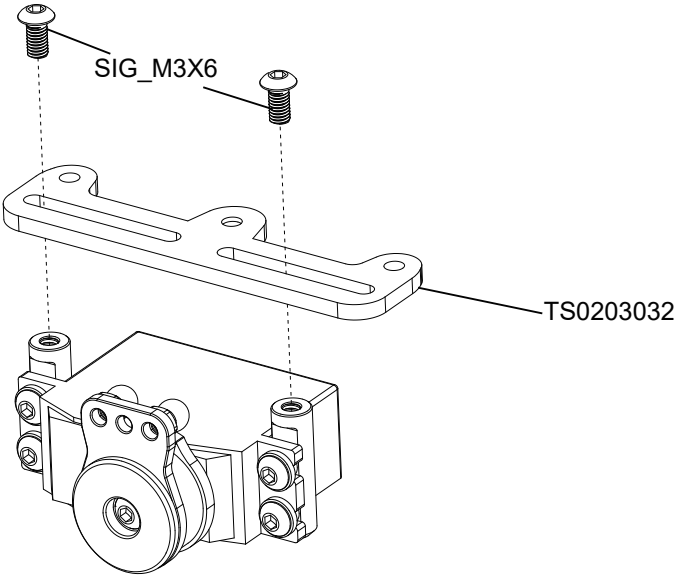
21





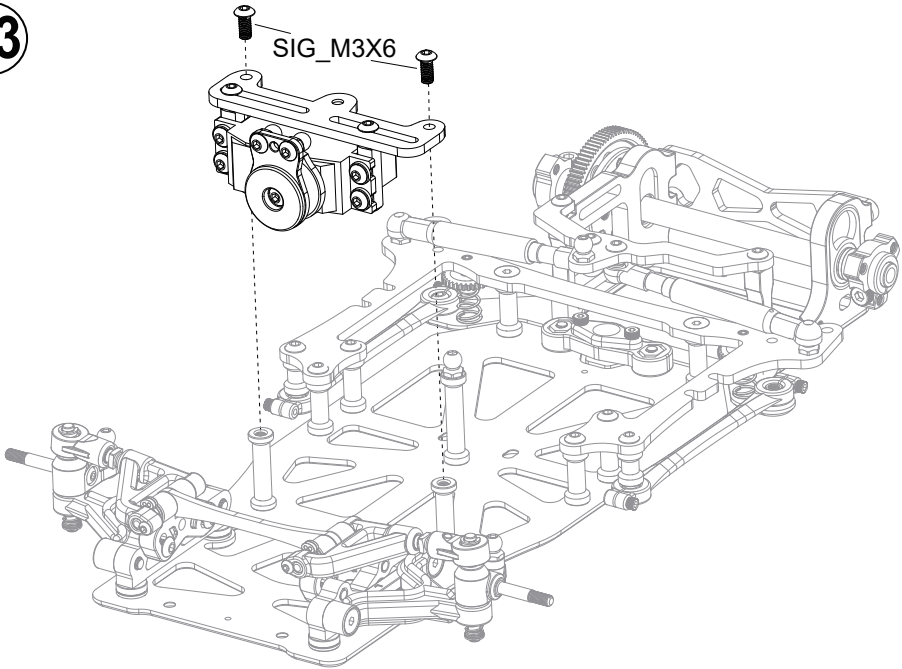
SIG\_M3X6 .....2

22



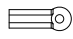
SIG\_M3X6 .....2

23



 (L=43mm)

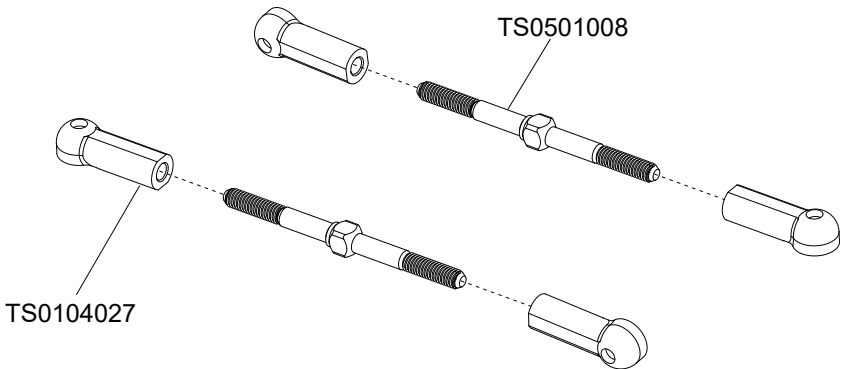
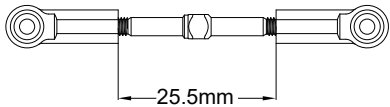
TS0501008 .....2

 (L=18.5mm)

TS0104027 .....4

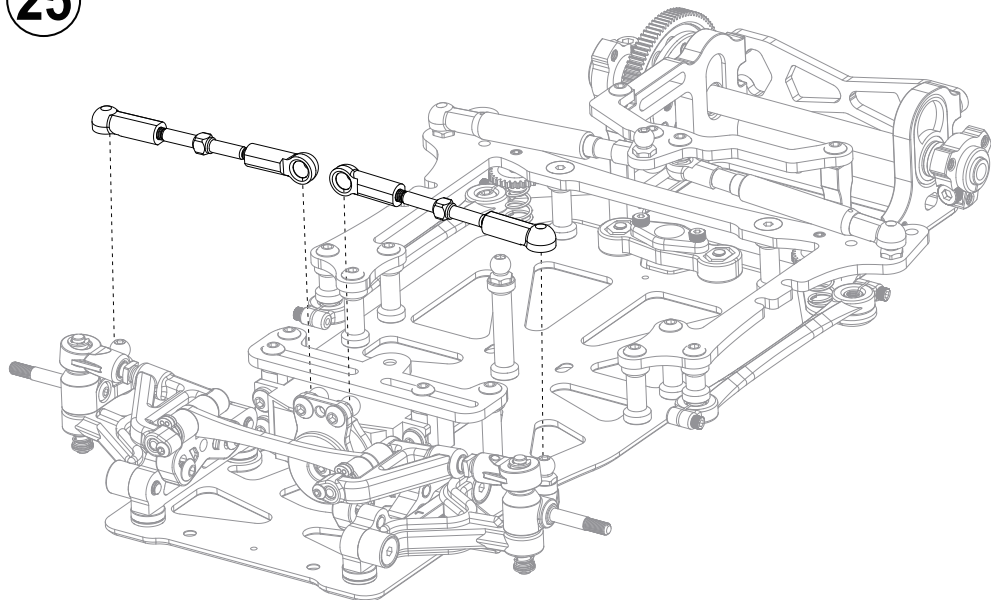
24

Servo saver





25



— L=22mm

TS0502001 .....1

⊙ 2X6X2.0

TS0505002 .....1

○ 6X8X1.0

TS0505003 .....1

○ 10X12X1.0

TS0505001 .....1

⊙

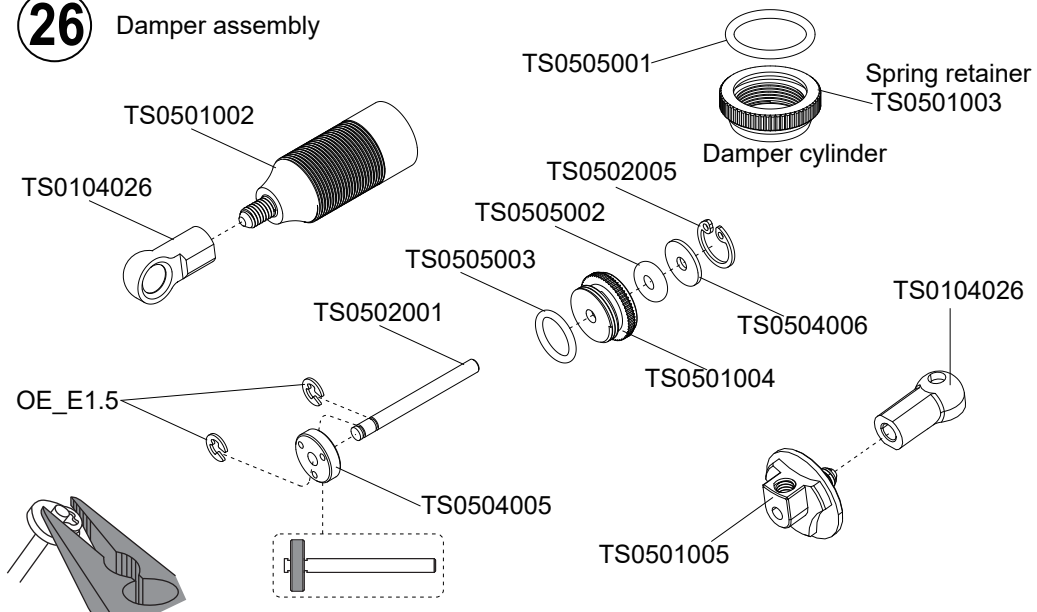
TS0502005 .....1

⊙

OE\_E1.5 .....2

26

Damper assembly



★ Snap on

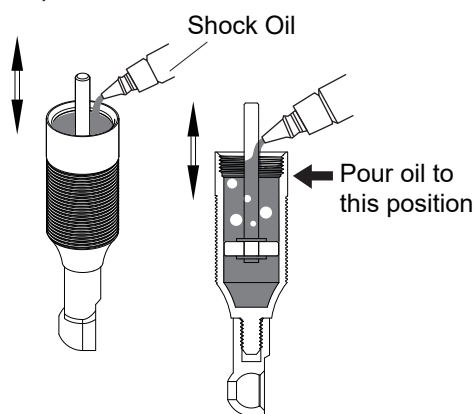


TS0102002 .....1

27

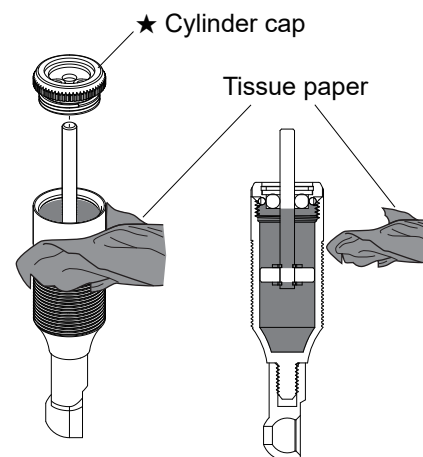
Dampers oil

1.Pull up piston and pour oil into cylinder .  
Remove air bubbles by slowly moving  
piston up and down.



★ Move slowly.

2.Pull up piston, attach oil seal and  
absorb oil overflow with tissue paper.





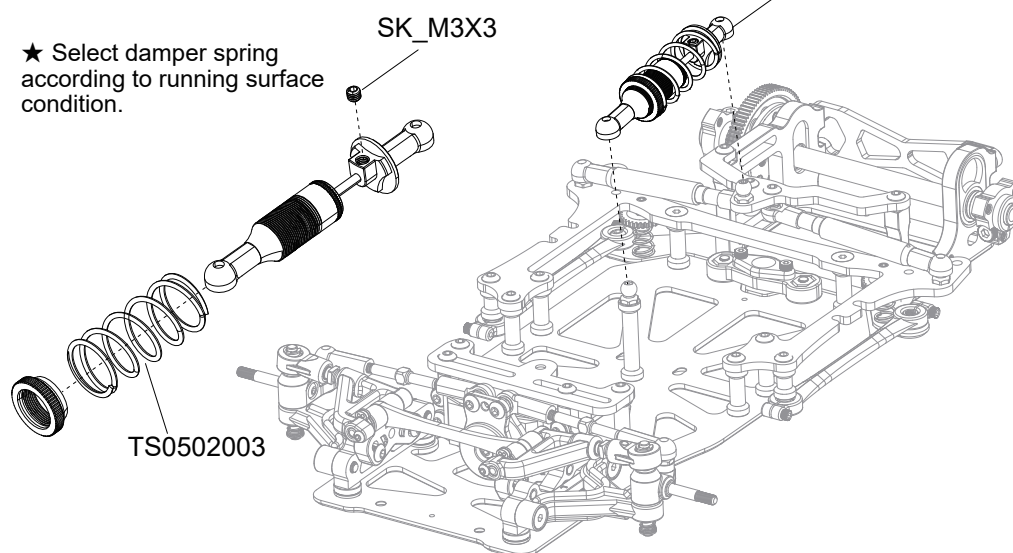
TS0502003 .....1



SK\_M3X3 .....1

## 28 Attaching dampers

★ Select damper spring according to running surface condition.



## 29 ~ 35 Kit Bag G



TS0104006 .....2



SIG\_M3X6 .....2

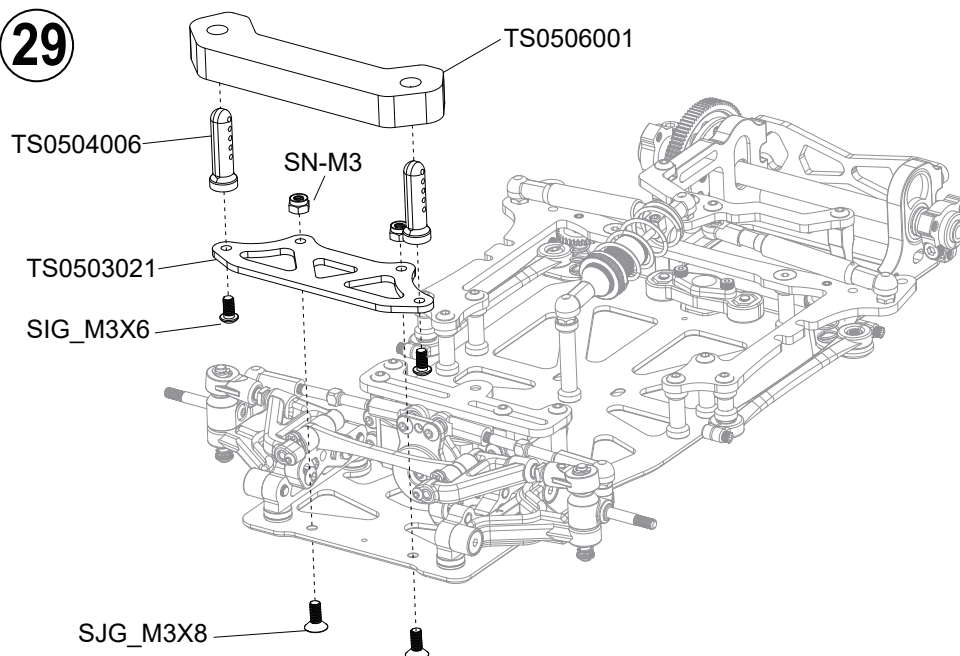


SJG\_M3X8 .....4



SN-M3 .....2

## 29

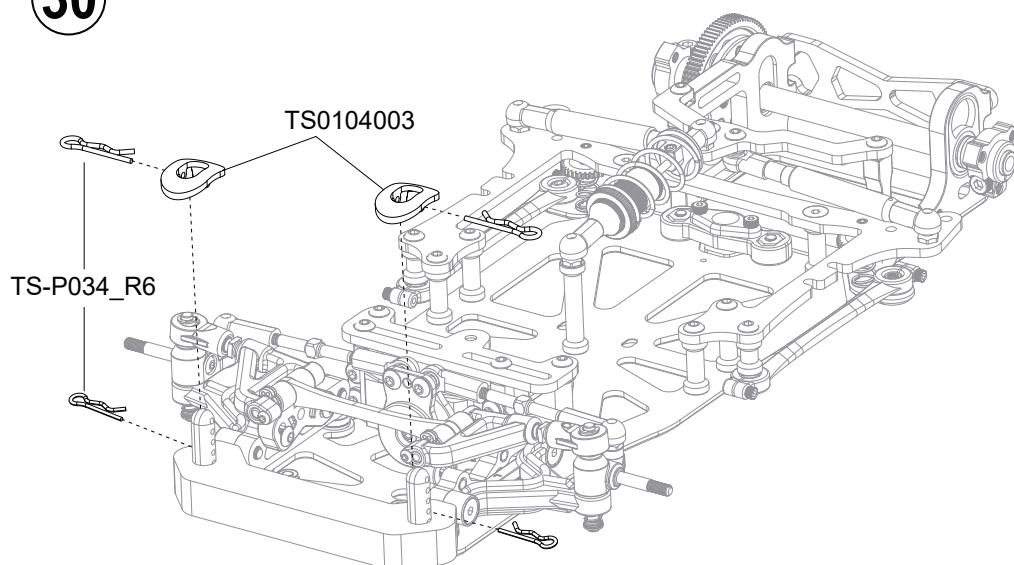


TS-P034\_R6 .....4



TS0104003 .....2

## 30

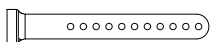




TS-P034\_R6 .....2



TS0104003 .....2



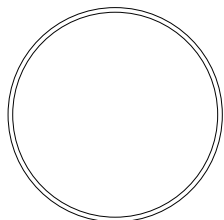
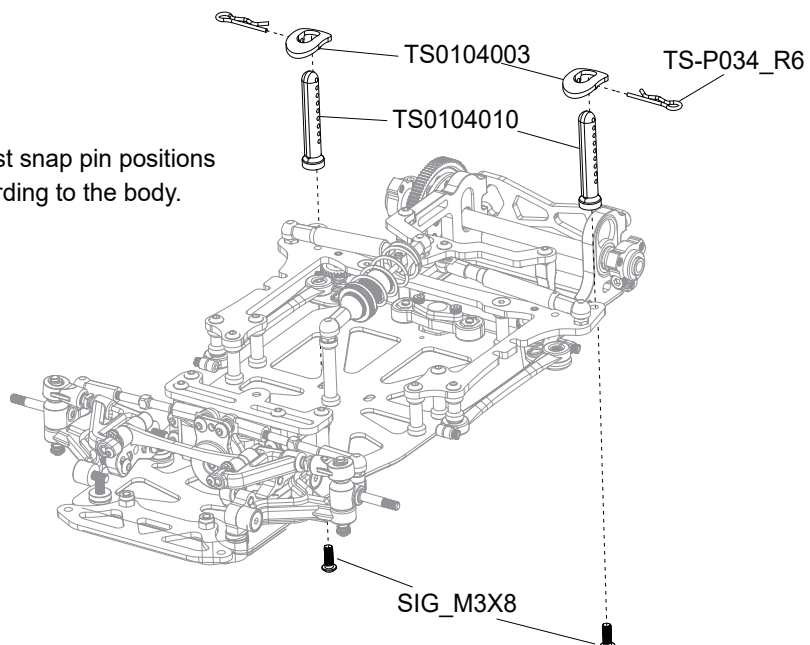
TS0104010 .....2



SIG\_M3X8 .....2

**31**

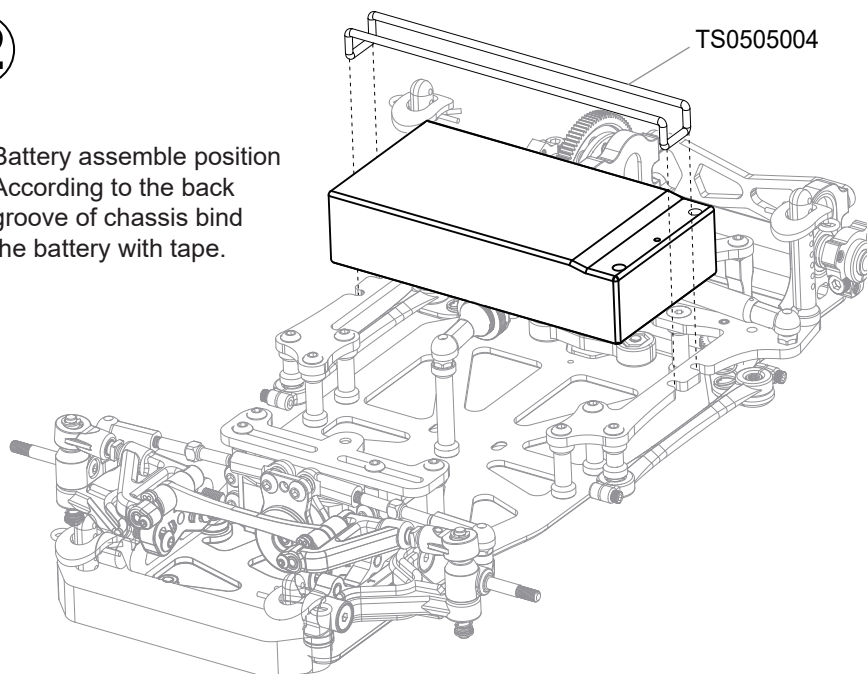
★ Adjust snap pin positions  
according to the body.



TS0505004 .....1

**32**

Battery assemble position  
According to the back  
groove of chassis bind  
the battery with tape.

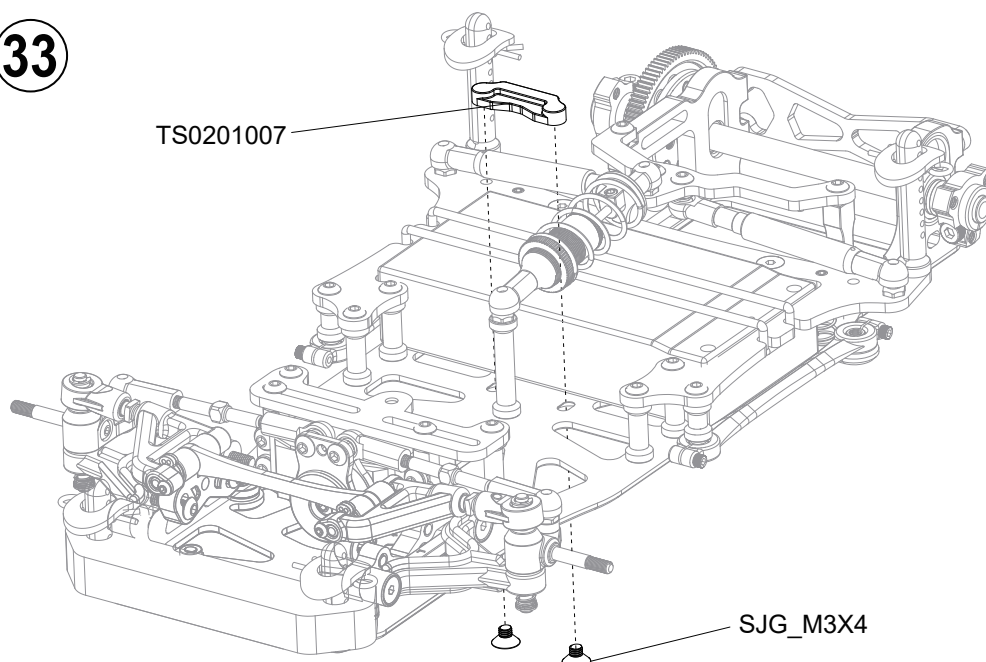


TS0201007 .....1



SJG\_M3X4 .....2

**33**





FR2-5ZZ .....4

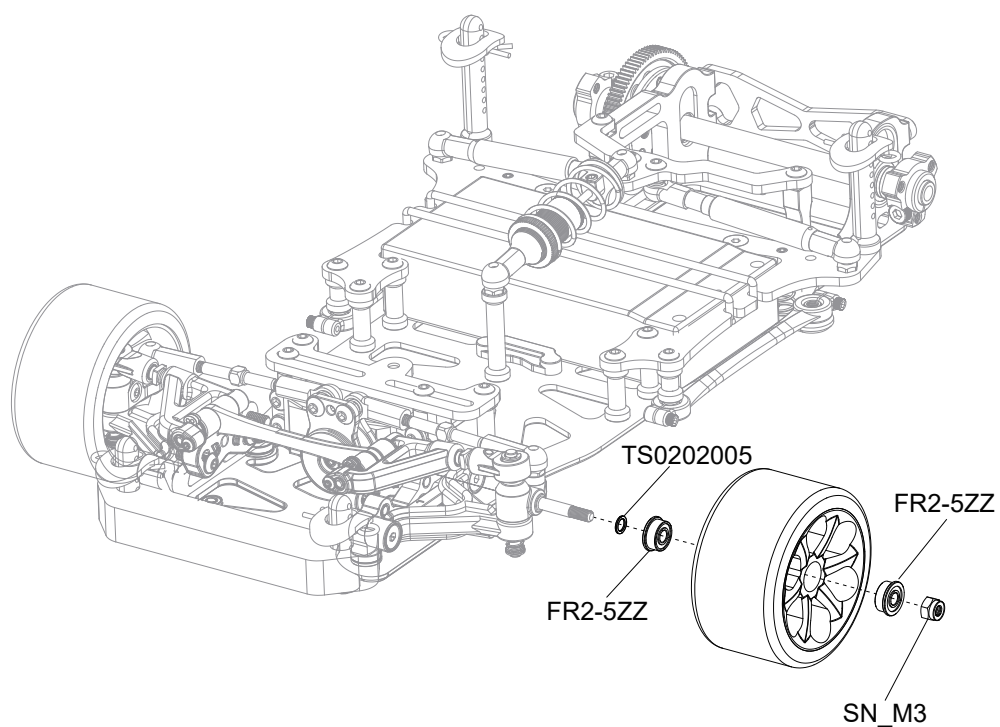


SN\_M3 .....2

○ 4.7X3.2X0.4

TS0202005 .....2

## 34 Attaching wheels



SG\_4#40 .....6

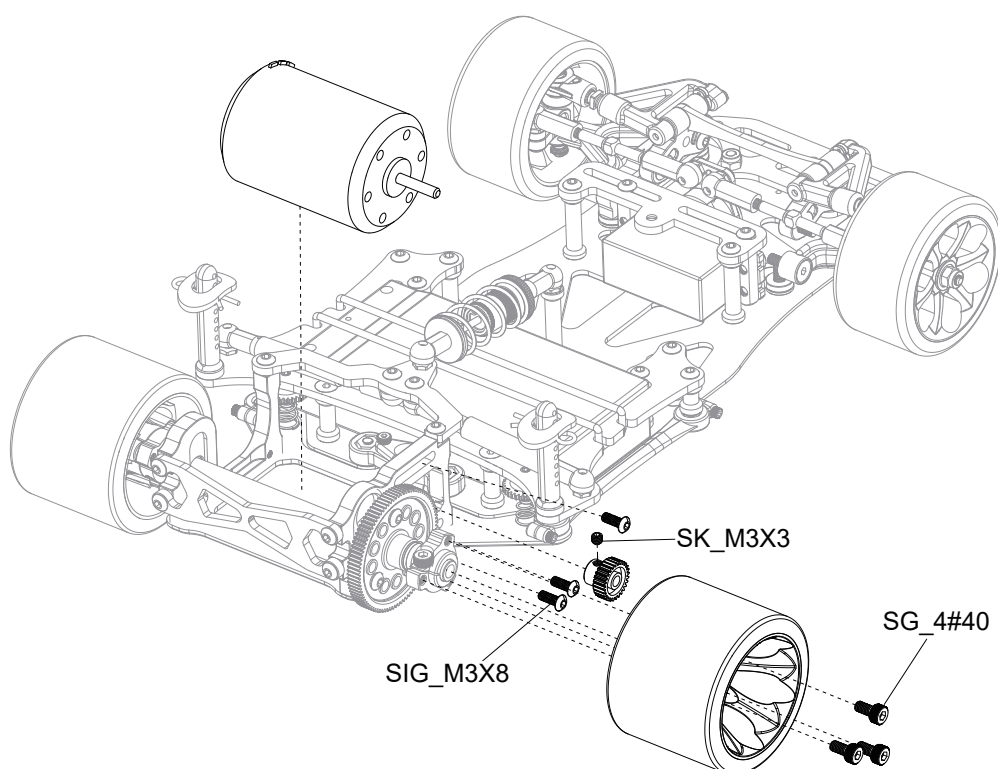


SK\_M3X3 .....1



SIG\_M3X8 .....3

## 35





# SETTING - UP

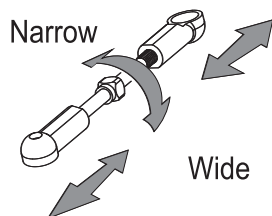
- Record various running conditions and settings on the setting sheet.

## TOE-IN AND TOE-OUT

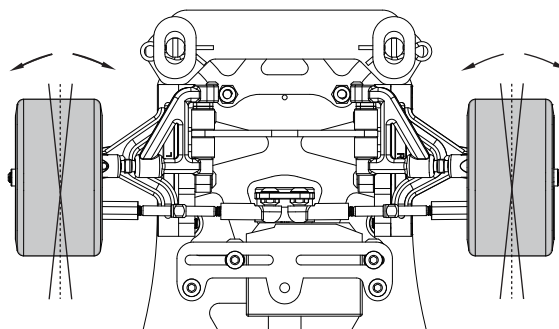
Toe-in and toe -out

★Adjust rod length by rotating adjuster.

★Make sure the servo is in neutral.



★Adjust according to the track layout.

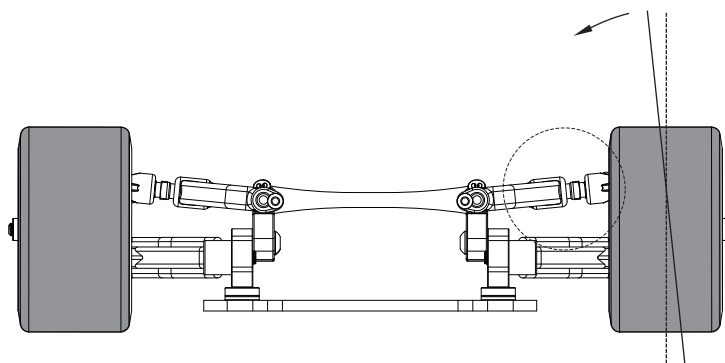
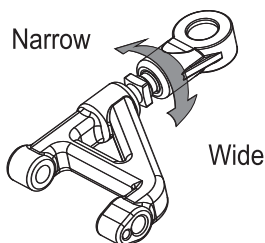


## CAMBER ANGLE

Camber angle



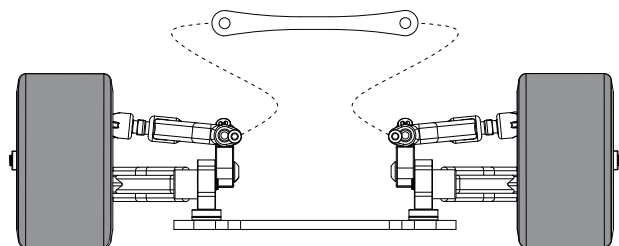
★Adapt for the draw bar to adjust camber angle.



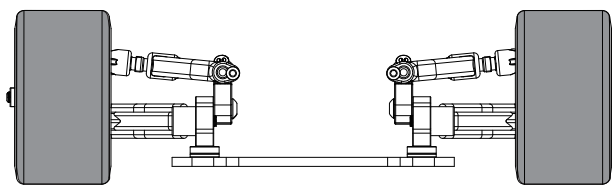
## GROUND CLEARANCE

Front

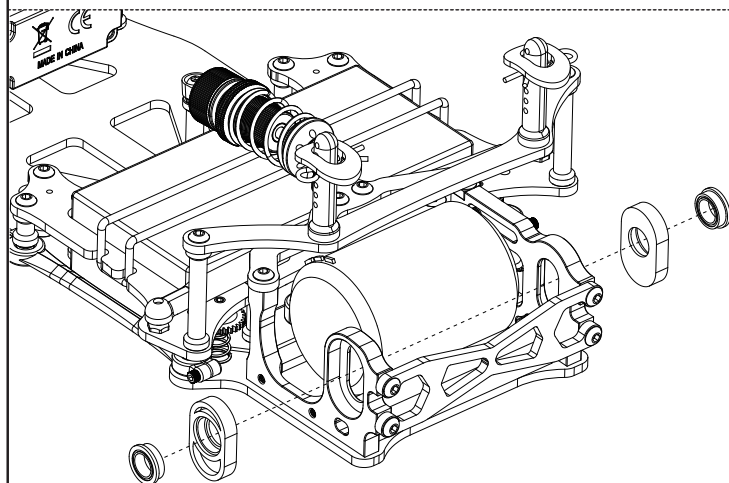
★Ways for adjusting the turnbuckle to fit the hardness of the front suspension.



Hard



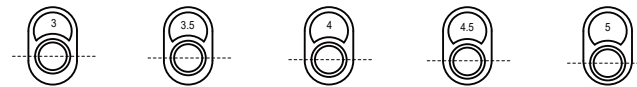
Soft



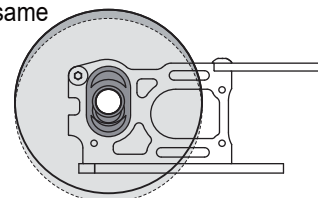
TS0104045 TS0104046 TS0104047 TS0104048 TS0104049



TS0104050 TS0104051 TS0104052 TS0104053 TS0104054



★ Use spacers of the same offset for the right and left, and make sure the shaft is horizontal.



**VAPON INDUSTRIAL CO., LTD**  
**[Http://www.saxoracing.com](http://www.saxoracing.com)**  
**[E-mail:saxo@saxoracing.com](mailto:saxo@saxoracing.com)**



**GT-300W-V4**

